



ArchiveLink Migration Toolkit (AMT) for SAP®

Mass Migrate Archived Data and Documents

Why Archive Migration

Change is ubiquitous. A change in corporate IT infrastructure strategy, M&A activity, lack of functionality in your existing solution, or unacceptable service levels are just a few of the reasons that may force you to replace your existing ArchiveLink storage system. How to migrate the archived data and documents from the existing solution should always be taken into consideration when a new ArchiveLink storage solution is implemented. Without proper planning and a go forward strategy, custom migrations can turn into big projects that overshadow the benefits of the new solution. The result may be a long-term drain on your IT budget in terms cost and human resources.

Challenges

Migration of archived content from one platform to other tends to be a complex and expensive proposition due to lack of standard tools and methodology. Each archiving vendor may offer their own variants of existing or custom developed programs for this task that tend to be hard-wired for a specific source and target repository combination and generally involve some operating system level tools. This approach not only presents time and budget overrun risks but also introduces potential risks around the consistency of migrated content. There have been cases where a long time after supposedly successful migration, customers have come across corrupt content because original team didn't understand intricacies of ArchiveLink storage such as the multipage vs. single page TIFF, KPro parent/child relations, SAPOffice documents, Pre-4.5 SAP Data Archiving links, text notes or unicode issues during migration. Another problem with archiving vendor specific migration process is that it creates a potential lock-in where in future if there is a need to migrate from the current target platform to another one, a whole new investment in migration process would need to take place.

Solution

The ArchiveLink Migration Toolkit (AMT) is a unique Dolphin solution for planning, executing and managing migration of archived data and documents from one ArchiveLink-certified content repository to another, regardless of the software vendor. It is a pure SAP based ABAP application and supports any ArchiveLink certified repository.

In contrast to the custom built or archive vendor specific process described earlier, the ArchiveLink Migration Toolkit is a turnkey solution that resides completely within SAP and requires no installation at the operating system level on either the SAP application server, existing archive server, or the new archive server.

The AMT permits all documents to be previewed prior to being migrated and provides a volume analysis of all implemented ArchiveLink scenarios.

The migration is seamless and transparent to the user and can be scheduled as background job, a big advantage. AMT has a built-in failsafe ensuring transactional integrity and automated reattempts in case of timeouts. In addition, the AMT allows integrity checks by comparing source and target components before committing the transaction.

The screenshot displays the 'Dolphin ArchiveLink Migration Utility' selection screen. It is organized into several sections:

- Archived Content Selection and Output Options:** A table for selecting document types and repositories. The 'Storage date' is set to 09/17/2010. Source and target content repositories are S1 and S2 respectively.
- Include/Exclude Options:** Checkboxes for 'Include ArchiveLink links', 'Include PrintList links', and 'Include Data Archive links'. There are also options for sorting: 'Sort Descending (newest first)' and 'Sort by Doc ID (vs. Date)'.
- Filter Documents with:** A section for filtering documents based on 'Notes', 'Annotations', and '# of Comps'. It also includes 'Online' and 'Offline' checkboxes.
- Preview Report:** A checkbox for 'Preview Report' and a 'Max # of Rows (per source)' field set to 500.
- Migration Processing Options:** Checkboxes for 'Create inactive OAC3 links', 'Compare After Copy?', and 'Delete Source Document!'.
- Dolphin Module Settings:** A section for configuring the Dolphin Copy Module, including 'Table Method', 'Loop Components', 'Printlist - data/descr Only', 'Convert to PDF', 'Seconds Before Retry', '# of Archiving Attempts', 'Max # of errors before stop', and 'Max # of minutes to run'.

Figure 1: Selection Screen

Some other key features of AMT are:

- Supports structured (Data Archiving, DART, Printlists) and unstructured (ArchiveLink documents, inbound/outbound) archived data migration
- Supports existing link/file information backup
- Supports both foreground and background migration
- Supports both RFC and HTTP protocols and any combination of these in the source or target repositories
- Supports the migration of pre-SAP R/3 4.5 ADK (data archiving file) links
- Supports space management of backup tables
- Supports SAP Office (Kpro SOFFCONT1) content migration
- Support SAP DMS KPro content migration

Source	Source CR	Archive Date	Document Type	SAP Object	Object#/Report/DA#	Status	Note	Annotation	# of Comps	Total Size	Archive Time	Archive DocID
TOA01	S1	09/17/2010	ZIXDZ_TAX	BKPF	100019000000012010	ONLINE			2	63,891	09/17/2010 17:45:17	775331037BC50B44843EE823FF3F93E5
TOA03	S1	09/17/2010	/DOL/PTSAP	BKPF	300051000000262010	ONLINE			1	68,347	09/17/2010 13:42:28	E6D03A980B66344CA3DB06F3847E1576

Figure 2 – Output List

Implementation

By A typical implementation of the AMT begins with a requirements-gathering workshop to analyze the current and new ArchiveLink systems and scenarios. AMT is used to assist with the analysis and can be transported before the workshop is completed. Based on the data gathered during the workshop, a situation-specific migration plan is developed. Dolphin can either perform the entire migration or provide a knowledge transfer if there are internal resources that will complete the actual migration once the initial setup and first batch migration are deemed successful.

Dolphin is available for support to help resolve runtime issues. At the end of the migration, we assist with verification of the completeness and quality of the migration.

About Dolphin

Dolphin makes crucial business operations like data management, data archiving, accounts payable, accounts receivable and order management run better and smarter for organizations using SAP solutions. Focused on improving business performance through Information Lifecycle Management and Business Process Management, Dolphin produces the right solution for each customer, faster, through its unmatched experience in SAP technologies, and its proven best practices, tools and SAP add-on applications. Dolphin solutions improve business and IT performance, lower total cost of ownership and deliver high return on investment. The company was founded in 1995 and has offices in Philadelphia, PA and San Jose, CA.

Visit us online at www.dolphin-corp.com to learn more!
 Dolphin, 1 (888) 305-9033, contact@dolphin-corp.com

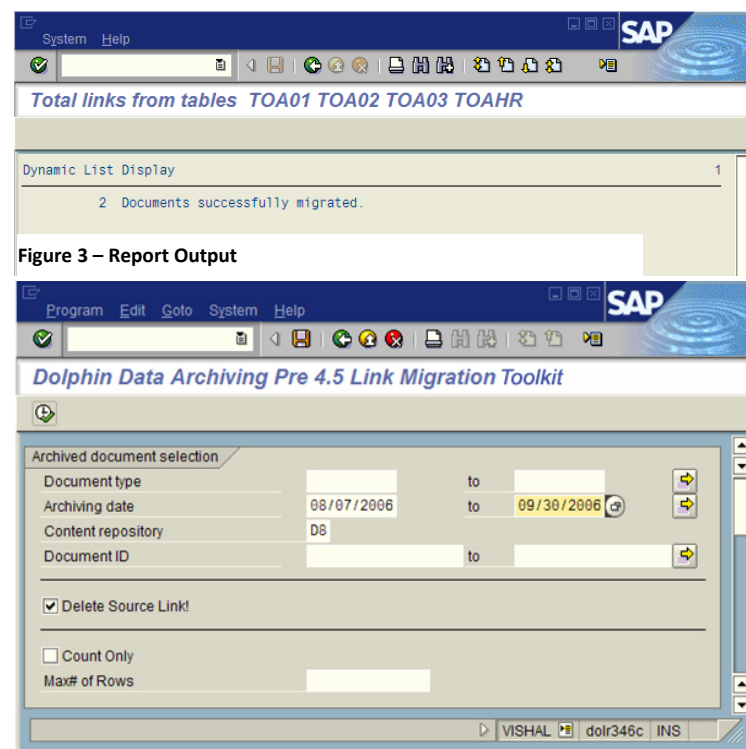


Figure 4 – ZDOLPDALNMIG Report Selection Screen



Smart Adaptable Proven™



Dolphin, Philadelphia, PA • San Jose, CA
 Phone: 1-888-305-9033

www.dolphin-corp.com • Email: contact@dolphin-corp.com