



Document Navigator and Output Solution for SAP® Applications

Search, batch and package output for supporting documents

Most companies using SAP systems and ArchiveLink will require cross-transactional search and batch distribution of business documents to customers, suppliers, remote locations, auditors and others. Distributing these documents involves mass printing, downloading, faxing or emailing of the archived documents. Most users are only able to open individual documents from a specific SAP transaction and the document viewer one-by-one; when you need to gather and distribute a large number of documents, this process is, at best, inefficient.

Since SAP spool does not handle archived documents and images, the only way to automate the process is to write complex custom ABAP or user-exits. These need to interact with the application server operating system level or third-party tools to perform some of these actions. Even then, a mass archived document output operation may adversely impact SAP performance. ABAP-driven content extraction from the content server, and then conversion, merge and output all heavily consume SAP system resources. In addition, your BASIS team may have reservations about installing third-party components on the application server.

Dolphin's Document Navigator and Output solution (DNO)

Document Navigator and Output incorporates two components:

Dolphin's Archive Print Server and a powerful cross-application search and communications framework. This resides within

SAP and includes a Document Search and Archive Print Server communication framework.

Document Navigator and Output includes:

- **Cross-transactional and optionally cross-system document navigation, search and batch output** (printing, downloading, e-mailing).
- **Specify output options**, such as download location, printer name, email addresses, file naming schema, merging and client side streaming.
- **Process multiple batches simultaneously.**

Newest Features in Document Navigator and Output

- **Document Navigator as a Web Service** includes simple integration with non-SAP applications that may need access to documents linked to SAP transactions.
- **Web user interface** that can be accessed as a standalone Web application or via an iView portlet.
- **Framework to support integration of Document Navigator and Output** with standard SAP transactions.
- **Support of PP/PM shop-papers in a package output scenario.**
- **Integration with ILM components** to allow queries based on retention attributes of documents.

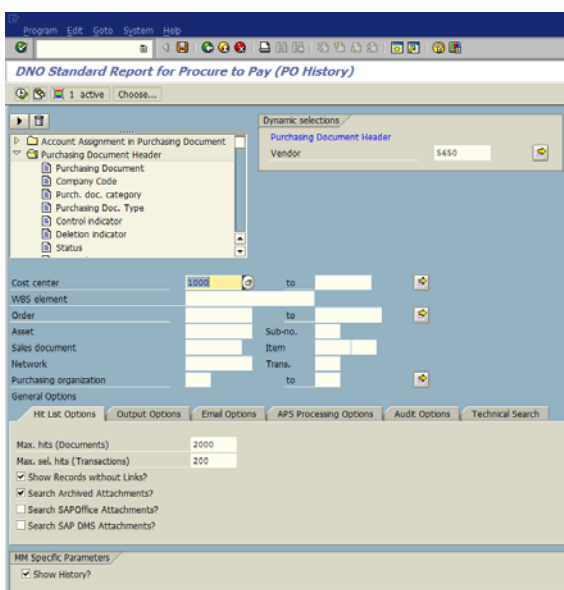


Fig. 1: Procure to Pay View Selection Screen

- **Customizable and out-of-the-box ABAP reports** for the most common type of SAP documents such as FI documents, SD orders, T&E receipts, HR employee files, procure to pay, PO History, order-to-cash document flow.
- **Easy set-up of document management scenarios.** DNO can serve as a simple and secure interface for indexing, archiving and search to access documents that do not have a direct relationship to standard SAP transactions; for instance, SOX documentation or legacy system documents.
- **"Package printing" support.** This is useful for printing supporting documentation such as Certificates of Analysis (COAs, MSDS, etc.) along with Deliveries, Purchase Orders or work instructions with shop-papers.

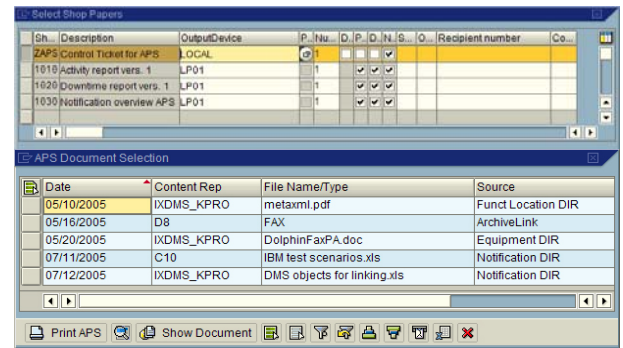


Fig 2: PM Shop Paper Output

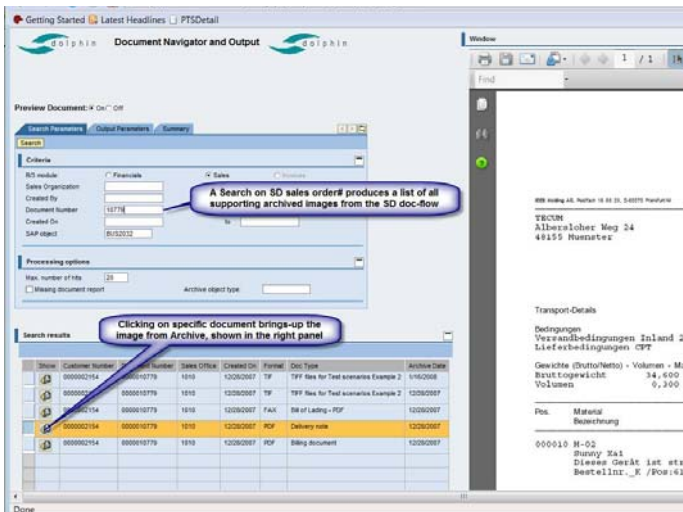


Fig 3: Sales order history and documents from DNO-Web

The Document Navigator and Output interface can be accessed either through SAP GUI or as a WebDynpro-based web application that can also be deployed as SAP portal iView.

About Dolphin

Dolphin makes crucial business operations like data management, data archiving, accounts payable, accounts receivable and order management run better and smarter for organizations using SAP solutions. Focused on improving business performance through Information Lifecycle Management and Business Process Management, Dolphin produces the right solution for each customer, faster, through its unmatched experience in SAP

technologies, and its proven best practices, tools and SAP add-on applications. Dolphin solutions improve business and IT performance, lower total cost of ownership and deliver high return on investment.

The company was founded in 1995 and has offices in Philadelphia, PA and San Jose, CA. Dolphin solutions are implemented across North America and around the world.

Visit us online at www.dolphin-corp.com to learn more!

Dolphin, 1 (888) 305-9033, contact@dolphin-corp.com



Smart Adaptable Proven™



Dolphin, Philadelphia, PA • San Jose, CA
Phone: 1-888-305-9033

www.dolphin-corp.com • Email: contact@dolphin-corp.com